

Kitchens Under \$50,000

GOLD AWARD

Michael Nash Custom Kitchens & Homes, Inc., Fairfax, Va.

Project location: Vienna, Va.

Sq. ft. before and after: 240

Project cost: \$44,500

SILVER

Otagawa-Anschel Design-Build, Minneapolis, Minn.

BRONZE

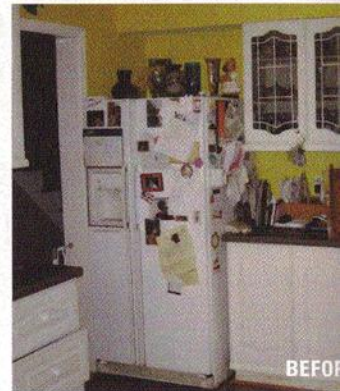
Good Home Construction, Anaheim, Calif.

HONORABLE MENTION

Artisan Design Group, Deer Mountain, Utah

Michael Nash Custom Kitchens & Homes, Inc. was asked to remodel this 1980s kitchen in Vienna, Va. It was long and narrow with a breakfast room at the end, but the traffic flow was very bad. The homeowners needed to access the breakfast room, porch and laundry areas through the kitchen, and they had to negotiate a maze to do it. The doorways were narrow; there were closets and cabinetry along all of the walls; and a peninsula jutting out into the middle of the room. The homeowners wanted a better flow as well as a French country style kitchen with formal accents.

The room was large enough, but poorly laid out. Michael Nash and company needed to flip the kitchen from one side to the other, freeing up space



along one wall for a traffic aisle. They designed a traffic area that bypassed the main work area of the kitchen entirely, so it would not interfere with the kitchen activities and have enough space to move around. It was also necessary to take out the closet pantry walls, and reroute plumbing and electrical wiring from the wall where the cabinets had been

NEW from the manufacturers of BETTER-BENCH®

RECESS-IT™

Products listed are produced of a corrosion resistant alloyed aluminum with an elastomeric-waterproofing and anti-fracture coating combined with an aggregate bonding base. Finished materials, ceramic tile, marble, granite, etc. can be applied immediately after product installation utilizing **standard** mastics or thin-set. Listed products are supplied with wall fasteners which may be used with/without preinstalled wood blocking. Also try our **Floating Shelf™**, a tile ready shelf support, for use with any Recess-It™ units.

BETTER-BENCH®

The Shower Bench Solution

An easy to install bench-forming system that replaces the complex methods currently in use.

For more information or a distributor near you, call

1-800-382-9653
INNOVIS CORPORATION
www.innoviscorp.com

For more information circle 46

Building Curved Walls?

Quick Curve PLATE

MUCH WASTE

Are you still cutting up sheets of plywood/OSB? Lots of material, lots of time.

NO WASTE

Assemble what you need. **NO WASTE**, incredibly fast!

Quick Curve Plate is the new standard for curved walls. Fast, accurate and NO WASTE.

ORDER DIRECT
 FOR A LIMITED TIME AT:
866.443.FLEX(3539)

FLEX-ABILITY CONCEPTS

Tel 866.443.3539 Fax 405.996.5353
 www.flexabilityconcepts.com

For more information circle 47